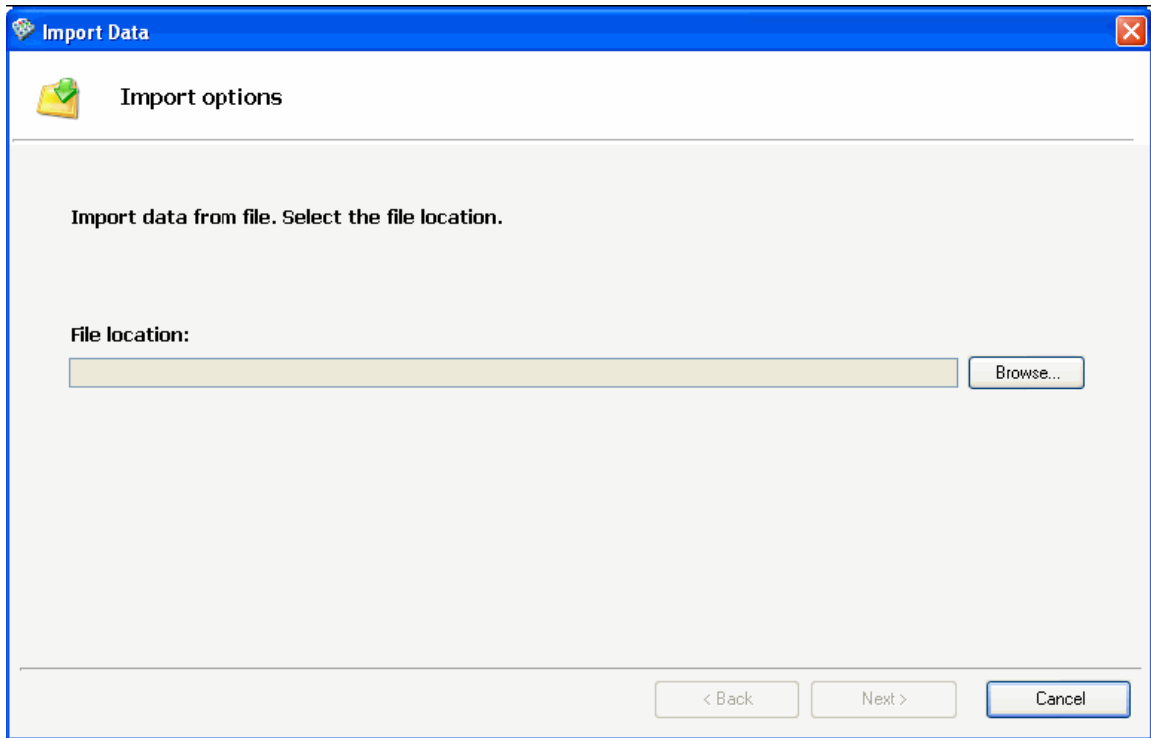


Importing BindIt protocols

Import protocols to your computer according to the following instructions.

1. Save the file "Protocol.ms2" to your computer using mouse right click.

Note: Protocols that have been made with KingFisher Software cannot be imported to the PC with the BindIt 3.0 Software.



2. In the **Home** menu, click **Import** on the action panel.

The *Import Data* dialog opens.

3. Click **Browse** to select the file (.ms2) that you want to import from a directory.

4. Select the desired file, and click **Open**.

5. Click **Next**.

6. Select the location to which you wish to import the protocol.

You can also create a new folder, and rename it.

7. Click **Finish**.

A message appears on the toolbar informing if the import was successful.